



# ETL SINAR SOLUTIONS SDN BHD (1344715-H)

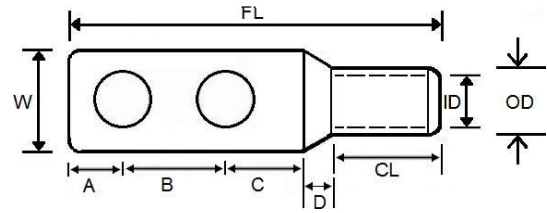
10-G, Jalan LP 7/5B, Taman Lestari Perdana, 43300 Seri Kembangan, Selangor.  
Tel : 018-3970397 [www.etlss.com.my](http://www.etlss.com.my)

## 2-HOLE CABLE LUG

Corona relief taper end for application up to 33 kV.  
Crimp Type for Hexagon and Indent Dies.



High Conductivity Copper : 99% I.A.C.S  
Copper Purity : 99.9%  
Finishing : Tin Plated

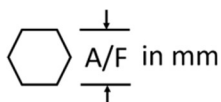


Copper Tube compliant to MS1540.

Size (mm <sup>2</sup> )	Stud hole	Item code	A	B	C	D	W	OD	ID	FL	CL	Hexagon Die A/F
16	M8	CLTH-16-8	10	45	12	8	12.0	7.8	5.6	88	13	6.4
25	M8	CLTH-25-8	10	45	12	11	13.5	9.3	7.0	98	20	7.7
35	M10	CLTH-35-10	12	45	14	11	16.0	10.8	8.4	103	21	8.9
50	M10	CLTH-50-10	12	45	14	12	18.0	12.5	9.5	105	22	10.3
70	M12	CLTH-70-12	14	45	16	14	20.5	14.4	11.2	114	25	11.9
95	M12	CLTH-95-12	16	45	18	14	25.0	17.5	13.5	118	25	14.5
120	M12	CLTH-120-12	16	45	18	15	28.0	19.0	14.6	122	28	15.7
150	M16	CLTH-150-16	16	45	18	19	31.5	21.4	16.4	128	30	17.6
185	M16	CLTH-185-16	16	45	18	22	35.0	23.7	18.5	133	32	19.5
240	M16	CLTH-240-16	16	45	18	25	40.0	27.4	21.0	154	50	22.6
300	M16	CLTH-300-16	16	45	18	28	45.0	30.5	23.5	157	50	25.2
400	M16	CLTH-400-16	19	45	22	30	50.0	34.0	26.2	176	60	28.5
500	M20	CLTH-500-20	19	45	22	30	55.0	38.6	30.0	181	65	32.1
630	M20	CLTH-630-20	19	45	22	35	64.0	44.7	34.5	186	65	37.0

### Notes:

1. All dimensions are in mm.
2. Other dimension customizations are available upon request.
3. Please consult with our sales personnel before order.



[WWW.ETLSS.COM.MY](http://WWW.ETLSS.COM.MY)

