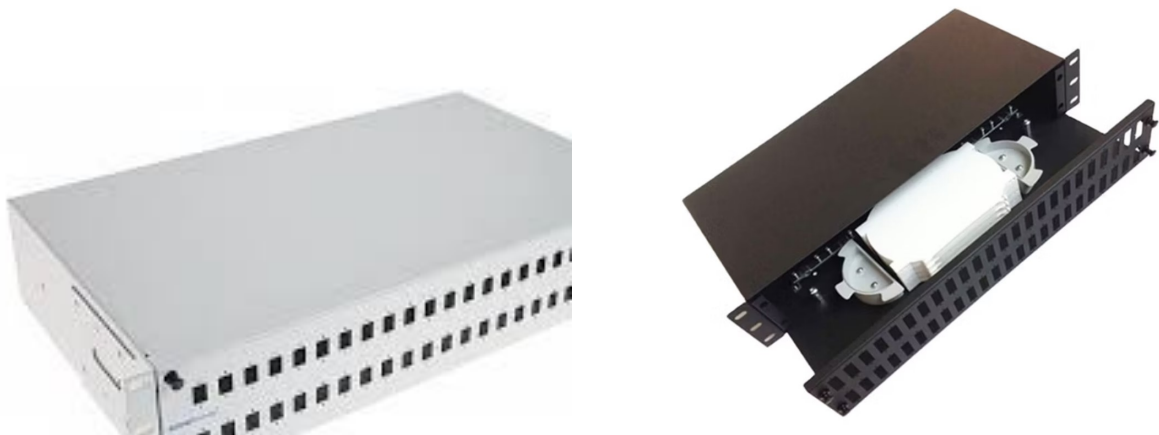

ETL 36-48 Port Rack Mount (Black/White)

ETL-RACK-B-2U-19-48 SC Rack-mount Fiber Optic Distribution Panel Frame for FC,SC,ST,LC,E2000 adapters. The enclosure is constructed of steel material and it's front panel is designed to easily remove for cabling and connector installation. And it's front panel is designed to easily remove for cabling and connector



Structure and specifications

Items	unit	Details
FTB Size	mm	44 * 85 * 230
Material	Epoxy color	Black/Gray White
Accommodates	(Pc)	Max 48 adaptor
entry cables	mm	Cable grand 20mm
exit cables	mm	Max diameter 20mm
Weight	Kg	2.5
Application	type	19" server rack
Temperatures	C	Temperatures: -40C -- 70C

Order information:

ETL-2U-19-48C-LC
↓ ↓ ↓
[Rack size]-[number core]- [type of adaptor]

Adaptor Type



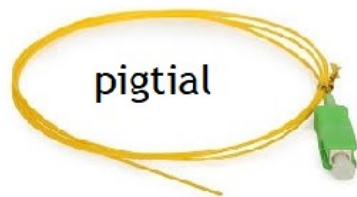
Number of adaptor use
SC/FC/ST/E2000(max)

etlsinarsolutions@gmail.com



Option Product Information:

The 2U-19 "Rack Mount Patch Panel extra installation item splice trays, fiber pigtail, 4 cable glands and splice tray



pigtail



Splice Tray (S-TR24)



Splice Sleeves
(FSLEEVE060)



Cable Glands
(M20)

