

# ETL Industries, Inc.

---

## Fiber Optic Link

### FIBER OPTIC CABLE SPECS

MD-061 2024-11-19

#### Indoor Fiber Optic Cable Assemblies - Plenum Rated (OFNP)

##### Pre-terminated 2 Indoor Fiber Cable

RLH Indoor pre-terminated fiber patch cord cable assemblies are ideal for campus network cabling between buildings. These cables are designed to meet both the rigorous environment of the outdoors by incorporating a UV rated jacket, and also the requirements of indoor routing, where Plenum (OFNP) flame rating is specified.

This dual purpose cable offers convenient and cost effective solution for cable routes spanning a variety of environments by eliminating the need for transition splicing to an indoor-rated cable when routing into the building. This reduces points of failure and associated down time for a wide range of institutions including office parks, hospitals and campuses.

RLH Indoor/Outdoor cable assemblies are pre-terminated with LC, SC or ST connectors, and can be ordered in any length required. Cable assemblies include a pull sheath for ease of deployment on site. Each assembly is fully tested and includes a certification test report.



Multimode OM4 Indoor 2-12 Fiber Cable Assembly showing LC Connectors and Pull Sheath

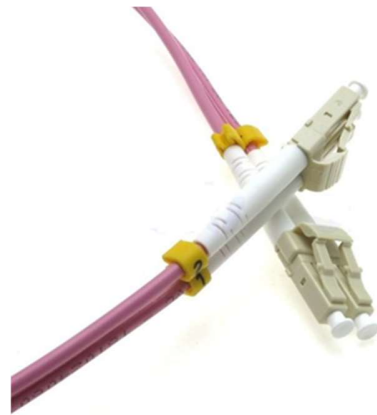
##### Application

- Plenum (OFNP) Inside and Outside Plant
- Campus LAN
- Building Interconnections
- Indoor cabin
- Cable ladder applications

##### Features

- Factory terminated and certified
- Pre-installed pulling sheath
- Fungus, and Moisture Resistant outer jacket
- Quick field installation

##### Typical Construction



# ETL Industries, Inc.

## Fiber Optic Link

### FIBER OPTIC CABLE SPECS

#### Specifications - Indoor Plenum (OFNP) Fiber Cable

Fiber Strands 2 and 12 Fiber	Max. Attenuation: Singlemode (1310/1550nm): 0.5/0.5 dB/km
Connector Type (Side 1 and 2) LC, SC or ST (depending on cable type)	Multimode OM1 (850/1300nm): 3.5/1.2 dB/km
Operating Temp. -40°C to +70°C	Multimode OM3 (850/1300nm): 3.0/1.2 dB/km
Fiber Type: Singlemode (9/125), Multimode OM1(62.5/125), Multimode OM3 (50/125), Multimode OM4 (50/125)	Multimode OM4 (850/1300nm): 3.0/1.2 dB/km
Bending Radius Install/ 15X O.D., Long Term 10X O.D.	Breakout Length: 6 Fiber: 18 inches
Jacket Rating: Plenum OFNP	12 Fiber: 36 inches
Approx. Weight: 2 - 6 Fiber: 18 lbs/kft	Minimum Recommended Conduit Size: 1"
8-12 Fiber: 27 lbs/kft	Typical Cable Diameter: 6F: 0.21 in/5.4mm
Jacket Type: Indoor/Outdoor	12F: 0.24 in/6.1mm
	Compliance: GR-20-CORE, GR-409-CORE, EIA/TIA 568, ICEA S-104-696, RoHS, REACH

#### Ordering Information\* - 2 Fiber Cable Assemblies

Fibers	Connectors	Mode	Rating	Part Number
6	ST	Singlemode	OFNP	RLH-06IPSM2-STST-B18-F-1
6	SC	Singlemode	OFNP	RLH-06IPSM2-SCSC-B18-F-1
6	LC	Singlemode	OFNP	RLH-06IPSM2-LCLC-B18-F-1
6	ST	Multimode (OM1)	OFNP	RLH-06IPMM2-STST-B18-F-1
6	SC	Multimode (OM1)	OFNP	RLH-06IPMM2-SCSC-B18-F-1
6	LC	Multimode (OM1)	OFNP	RLH-06IPMM2-LCLC-B18-F-1
6	SC	Multimode (OM3)	OFNP	RLH-06IPMX2-SCSC-B18-F-1
6	LC	Multimode (OM3)	OFNP	RLH-06IPMX2-LCLC-B18-F-1
6	SC	Multimode (OM4)	OFNP	RLH-06IPMC2-SCSC-B18-F-1
6	LC	Multimode (OM4)	OFNP	RLH-06IPMC2-LCLC-B18-F-1

#### Ordering Information\* - 12 Fiber Cable Assemblies

Fibers	Connectors	Mode	Rating	Part Number
12	ST	Singlemode	OFNP	RLH-12IPSM2-STST-B36-F-1
12	SC	Singlemode	OFNP	RLH-12IPSM2-SCSC-B36-F-1
12	LC	Singlemode	OFNP	RLH-12IPSM2-LCLC-B36-F-1
12	ST	Multimode (OM1)	OFNP	RLH-12IPMM2-STST-B36-F-1
12	SC	Multimode (OM1)	OFNP	RLH-12IPMM2-SCSC-B36-F-1
12	LC	Multimode (OM1)	OFNP	RLH-12IPMM2-LCLC-B36-F-1
12	SC	Multimode (OM3)	OFNP	RLH-12IPMX2-SCSC-B36-F-1
12	LC	Multimode (OM3)	OFNP	RLH-12IPMX2-LCLC-B36-F-1
12	SC	Multimode (OM4)	OFNP	RLH-12IPMC2-SCSC-B36-F-1
12	LC	Multimode (OM4)	OFNP	RLH-12IPMC2-LCLC-B36-F-1

*ETL Industries, Inc.*  
*Fiber Optic Link*

**FIBER OPTIC CABLE SPECS**

---

\*Specify desired length at time of order [www.etlss.com.my](http://www.etlss.com.my)